

---

# Second Bulletin

---

---

## 8th International Workshop on Tau-Lepton Physics Tau04

---

<http://www.hepl.phys.nagoya-u.ac.jp/public/Tau04/>

Tuesday, September 14 – Friday, September 17, 2004, Nara, Japan.

### 1. General Information

The 8th International Workshop on Tau-Lepton Physics, Tau04, will be held at Nara-Ken New Public Hall in Nara, Japan, from Tuesday, September 14 to Friday, September 17, 2004. This is the eighth Workshop of this series devoted to the physics of the tau lepton and its associated neutrino. This series of workshops has been organized every two years since the first workshop at the University of Paris (Orsay, France) in 1990. The latest workshop was held in 2002, at the University of California, Santa Cruz, California, USA.

The goal of the Workshop is to give theorists and experimentalists the opportunity to discuss recent progress in tau lepton physics. At the workshop the following topics will be covered:

- Tau results from high energy machines, low energy machines and B-factories
- Lepton Flavor Violation in tau decays
- Measurement of the tau branching fractions
- Measurement of the tau spectral functions
- Search for CP-violation in lepton sector
- Cabibbo suppressed decays and strange quark mass
- Recent results from  $g-2$  experiments
- Hadronic cross section measurement at  $e+e-$  colliders
- Neutrino oscillation experiments
- Tau lepton at hadron machines
- Lepton Flavor Violation in the muon sector
- Several review talks on the future prospects



## 2. Scientific Program

The workshop will include invited talks and contributed talks. If you are interested in giving a presentation at the workshop, please submit an abstract to [tau04@hepl.phys.nagoya-u.ac.jp](mailto:tau04@hepl.phys.nagoya-u.ac.jp) by July 15, 2004.

The details of the scientific program will be posted at the workshop web site. The program will continue to be updated as the speakers are confirmed.

The proceedings will be published in Nucl. Phys. B (Proc. Suppl.).

## 3. Workshop schedule

### September 13 (Monday)

15:00-20:00	Registration	(Mitsui Garden Hotel)
18:00-20:00	Reception	(Mitsui Garden Hotel)

### September 14 (Tuesday)

9:00-12:00	Plenary Talks
13:30-18:00	Plenary Talks

### September 15 (Wednesday)

9:00-12:00	Plenary Talks
13:30-18:00	Plenary Talks
19:00-21:00	Workshop dinner

### September 16 (Thursday)

9:00-12:10	Plenary Talks
12:30-18:00	Excursion

### September 17 (Friday)

9:00-12:10	Plenary Talks
------------	---------------



## **4. Registration and Accommodation**

The registration fee is 30,000 Japanese yen for the early registration on or before July 31 (Saturday), it is 35,000 yen afterwards. The registration fee includes a Workshop dinner ticket, lunch and coffee-service during break throughout the workshop, the welcome reception on Monday evening, the half-day excursion on September 16 and the cost of proceedings.

The registration fee for each accompanying person is 5,000 yen. This fee includes a Workshop dinner ticket, coffee-service throughout the Workshop, the welcome reception and the half-day excursion.

Payment of the registration fee can be made by a credit card as part of the web site registration process. All participants are requested to register via the Tau04 webpage:

<http://www.hepl.phys.nagoya-u.ac.jp/public/Tau04/>

Refund of the registration fee and extra charge will be made for cancellations received by August 20 (Friday). Cancellation notice should be made by E-mail to the secretariat. There is no refund for cancellation after August 20.

In addition to the registration, the hotel reservation can be made with a discount rate on the same web site. We are booking rooms in the Mitsui Garden Hotel located in Nara City. The address of the hotel and its telephone number are

8-1 Sanjo-Honmachi Nara-City 630-8122, Japan,

Tel.(Fax): +81-742-35-8831(6868)

## **5. Reception, Workshop dinner and Excursion**

Participants arriving in Nara on September 13 are invited to a welcome reception of Tau04, to be held on the fourth floor (Hagoromo room) at the Mitsui Garden Hotel from 6 - 8 pm. You may complete your conference registration at the reception. The reception desk of the hotel is on the third floor of the building.

The Workshop dinner will be held in the Japanese garden, the best place to enjoy seasonal change, at the Nara-ken New Public Hall on Wednesday, September 15.



Included in the excursion on Thursday, September 16 is a visit to the Houryuji temple. Houryuji is a designated national cultural property, well known as the world oldest surviving wooden structure, which will provide a visitor with a glimpse of Japanese ancient past.

## **6. Access to Nara**

The most convenient means of transportation is to take a direct flight to the Kansai International Airport (KIX). From there, the simplest route to Nara is by the Airport Limousine Bus, which takes approximately 85 minutes to arrive at the Nara City. There are three bus-stops in the city, Nara Hotel, Kintetsu Nara-Station and JR Nara-Station. The conference Hotel (Mitsui Garden Hotel) is only a three-minute walk from the JR Nara-Station.

The bus ticket costs 1,800 yen per person one way. Buses depart from the bus stop No.9 at the Kansai Airport. The bus ticket can be bought in the vending machine near the stop No.9.

The buses are scheduled to depart approximately every 60 minutes. The earliest one departs at 7:40 AM and the last one at 8:40 PM. The limousine bus timetable is available on the tau04 web-page. Any inquiries regarding access to Nara can be made at the Information Desk at the airport on the first floor in front of the arrival area. At present, only Japanese explanation is available on the front panel of the vending machine.

## **7. Access to workshop site**

The Workshop will be held in the Nara-Ken New Public Hall (Shin-Kokaido) in Nara Park, Nara. The Hall is about 30 minute walk from the Mitsui Garden Hotel. A shuttle bus from the hotel to the conference site will be provided in the morning. The bus departs from the hotel at 8:30 am.

## **8. Climate of Nara in September**

The temperature of Nara in September is between 20 and 25 degrees Centigrade. It is quite warm in the daytime and becomes cooler (less than 18 degrees Centigrade in the



morning and evening). The weather is usually fine but can sometimes suddenly change. September is a typhoon season in Japan, which hits Japan once per Month on the average.

## 9. Visas

Participants from the countries for which a visa is required should apply to a Japanese Consulate before their departure. For general information about a visa application,

please visit: [http://www.mofa.go.jp/j\\_info/visit/visa/](http://www.mofa.go.jp/j_info/visit/visa/).

Official letters of invitations to the Workshop for a visa application or other purpose can be provided for participants on request. Please contact us by the end of July to allow enough time for a visa application for your September visit.

## 10. Schedule

Here are some important dates to remember:

July 15 (Thursday)	Deadline for abstract submission
July 31 (Saturday)	Deadline for the early registration fee
September 13 (Monday)	Welcome reception at the Mitsui Garden Hotel
September 14 (Tuesday)	Tau04 scientific program starts at 9 am.
September 15 (Wednesday)	Workshop dinner
September 16 (Thursday)	Excursion in the afternoon
September 17 (Friday)	Tau04 ends by 12:30 pm

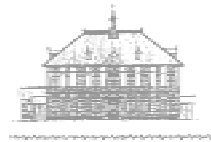
## 11. Correspondence

All correspondence concerning the workshop should be addressed by E-mail to [tau04@hepl.phys.nagoya-u.ac.jp](mailto:tau04@hepl.phys.nagoya-u.ac.jp)

^^^^^^

Tau04,  
Department of Physics,

**Tau04 September 14-17, 2004. Nara, Japan**



**Nara Women's University,  
Kita-Uoya, Nishi-Machi  
Nara 630-8506, Japan**

**Tel.(Fax) +81-742-20-3389(3390)**

**The workshop is supported in part by Grant-in-Aid for Scientific Research on Priority,  
Area 14046102 from the Ministry of Education, Culture, Sports, Science and Technology,  
Japan and Inoue Foundation for Science.**